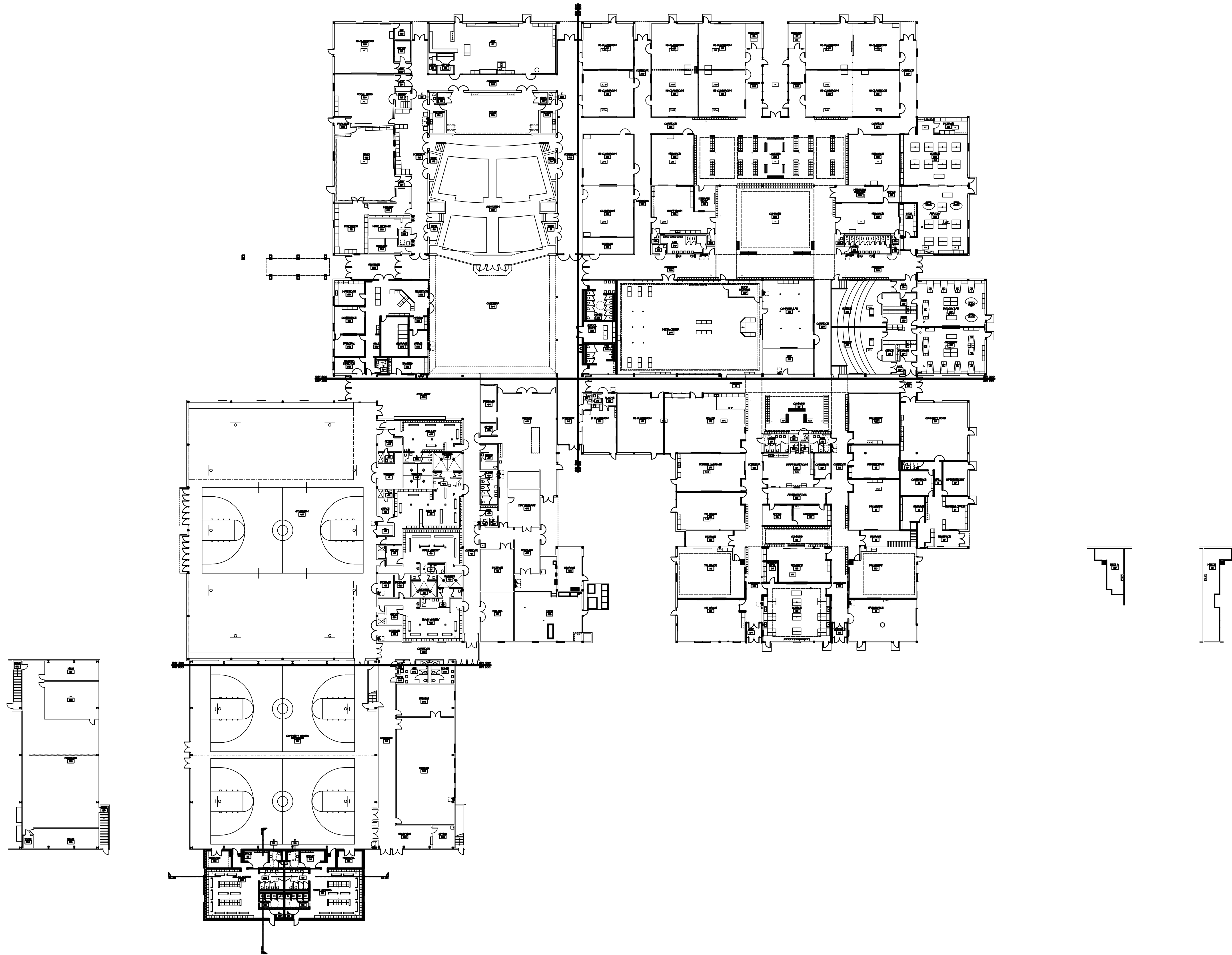


GENERAL NOTES:
EXISTING BUILDING AREA: 53,468 GSF
NEW ADDITION AREA: 6,000 GSF
TOTAL AREA: 59,468 GSF
GRADE LEVELS SERVED: 1-12TH GRADES

PROGRESS PRINT
THE PURPOSE OF THIS DRAWING IS TO ILLUSTRATE DESIGN INTENT ONLY. THIS DOCUMENT IS A PROGRESS PRINT FOR REVIEW, AND SHOULD NOT BE CONSIDERED TO ILLUSTRATE COMPLETENESS OF THE FINAL SCOPE OF WORK FOR THIS PROJECT.

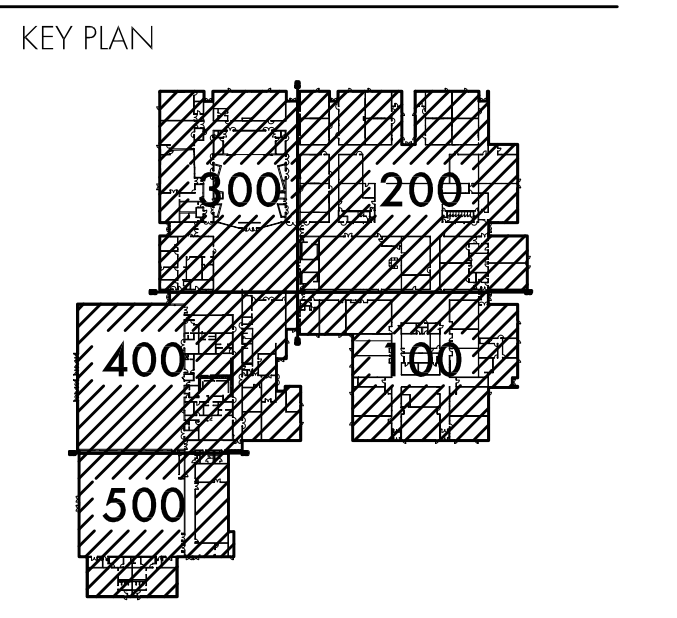



1 COMPOSITE PLAN
1/32" = 1'-0"

Columbia High School
Columbia School District
Brooklyn, Michigan



REVISIONS/REVIEW	DATE
SCHEMATIC DESIGN	JUNE 5, 2014
DESIGN DEVELOPMENT	AUGUST 7, 2014



JOB NO. 2457.12  NORTH

SHEET TITLE
COMPOSITE PLAN

SHEET NO.
h-a0.1